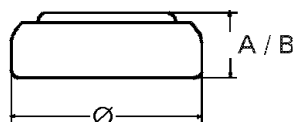


Data Sheet ¹



Type Number	65013
Type Designation	ML1220
Designation IEC	---
System	Lithium-Alloy / Manganese Dioxide Organic Electrolyte
Application	MBU / RTC
UL Recognition	MH13654
Nominal Voltage [V]	3,0
Typical capacity C [mAh]	16 (Disch. 0,2 mA down to 2.0V at 20°C)
Dimensions [mm]	min. max.
Diameter	12.3 12.5
Height (A/B)	1.8 2.0
Weight, approx. [g]	1.0
Charging Method	
Constant current	0,2 mA, Cut-off voltage 3.4V
Constant Voltage	3.4V (R _L =15kΩ)
Discharge cut-off voltage [V]	2.0
Max. Pulse Discharge Current [mA]	8
Max. Discharge current (cont.) [mA]	2
Operating temperature [°C]	Storage, Discharge and Charge -20°C to +60°C
Resistance [Ω]	40 - 80
Self discharge [%/p.a.]	< 3
Life expectancy [cycles]	
10%DOD	> 1000
100%DOD	> 50

¹ Prior to use read Material Data Sheet